

# Centrex

## INLINE CENTRAL EXTRACT UNIT - MECHANICAL EXTRACT VENTILATION - MEV



- **Efficient, low energy solution to controlling condensation and pollution in residential properties up to 185m<sup>2</sup>**
- **Variable choice of low (trickle), boost and purge speed at installation**
- **For Ceiling, loft or void installation**
- **Compact, ultra low profile unit**
- **Requires only one discharge grille**
- **Integral, adjustable over-run timer**
- **Cost saving compared to multi-spigot installation**
- **Low noise levels**
- **Low running costs**
- **Optional 125mm or 204x60mm Ducting Spigots**
- **Humidistat model available (H)**
- **Complies with Building ADF (System 3)**
- **Manufactured in UK to ISO9001**

**GENERAL FEATURES**

- up to 97 litre/ sec at 50Pa - max 108 litre/ sec capacity
- sfp down to 0.20 W/ l/ s
- easy and economical to install and maintain
- for ceiling, loft or void in-line installation
- can be angled horizontally or vertically
- variable low (trickle), boost and purge options - purge option factory set
- boost speed can be activated by a 230V switched live from:
  - A light switch (if more than one light switch is used, each one must be a double pole switch)
  - Remote humidistat (230V -DRH240)
  - Passive infra red (230V -PIRFF)
  - Thermostat (230V -THM)
  - Remote switch/ pull cord - 230V
- very low noise levels
- low running costs
- 3 year warranty - 1 year parts and labour, 2 years parts only

**TECHNICAL FEATURES**

- compact, low profile unit
- casing from galvanised sheet steel
- thermal overload protection
- pre-wired for easy electrical connection
- service and maintenance panel easily accessible
- low energy EC external rotor motor with sealed for life bearings and dynamically balanced backward curved impellers
- operates in temperature up to 60°C
- complete with mounting bracket and anti-vibration plate
- IPX4 rated

**CONTROL FEATURES**

- variable adjustment - trickle, boost and purge speeds set at installation (purge option factory set)
- boost setting (via switched live)
- integral, adjustable over-run timer - adjustable from 0-30 minutes set at installation

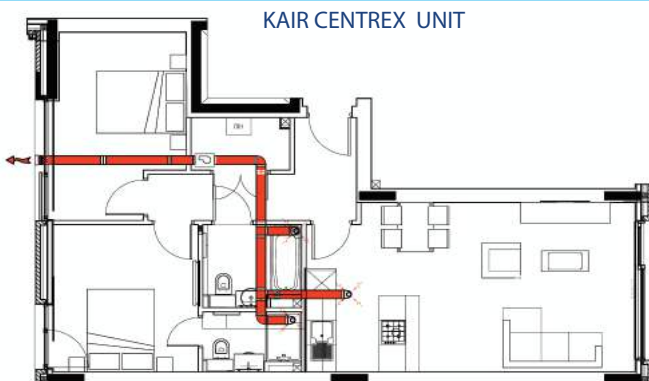
**COMPLIES WITH**

- Part L1 A 2013 of Building Regulations for enhanced energy saving capability
- Part F 2013 of Building Regulations for reliable, efficient ventilation
- EU RoHS Directive Compliant.
- Complies with IEC60335-2-80, LVD2006/ 95/ CE and EMC2014/ 30/ UE (European Directive against radio interference and electro-magnetic compatibility)
- manufactured in UK to ISO 9001
- CE marked
- Energy Saving Trust Best Practice Compliant

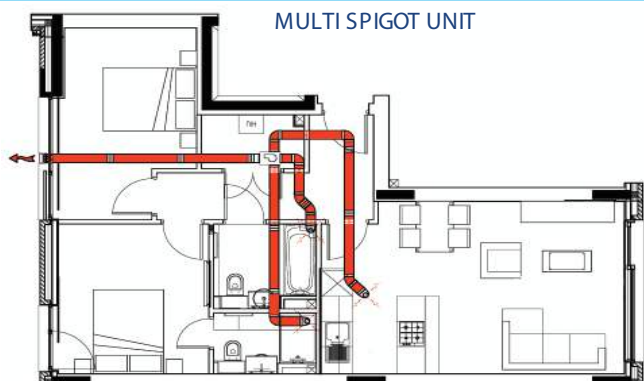


**CX204**  
with rectangular spigots - 204mm x 60mm

**DUCT RUN COST SAVINGS**



**KAIR CENTREX UNIT**



**MULTI SPIGOT UNIT**

TYPICAL SAVING - £250 PER SYSTEM -less ducting, fewer fire dampers and less coring, easier to install

**MODELS AVAILABLE:**

- CX125T – 125mm spigots with integral timer
- CX125HT – 125mm spigots with integral timer and humidistat
- CX204T – 204x60mm spigots with integral timer
- CX204HT – 204x60mm spigots with integral timer and humidistat

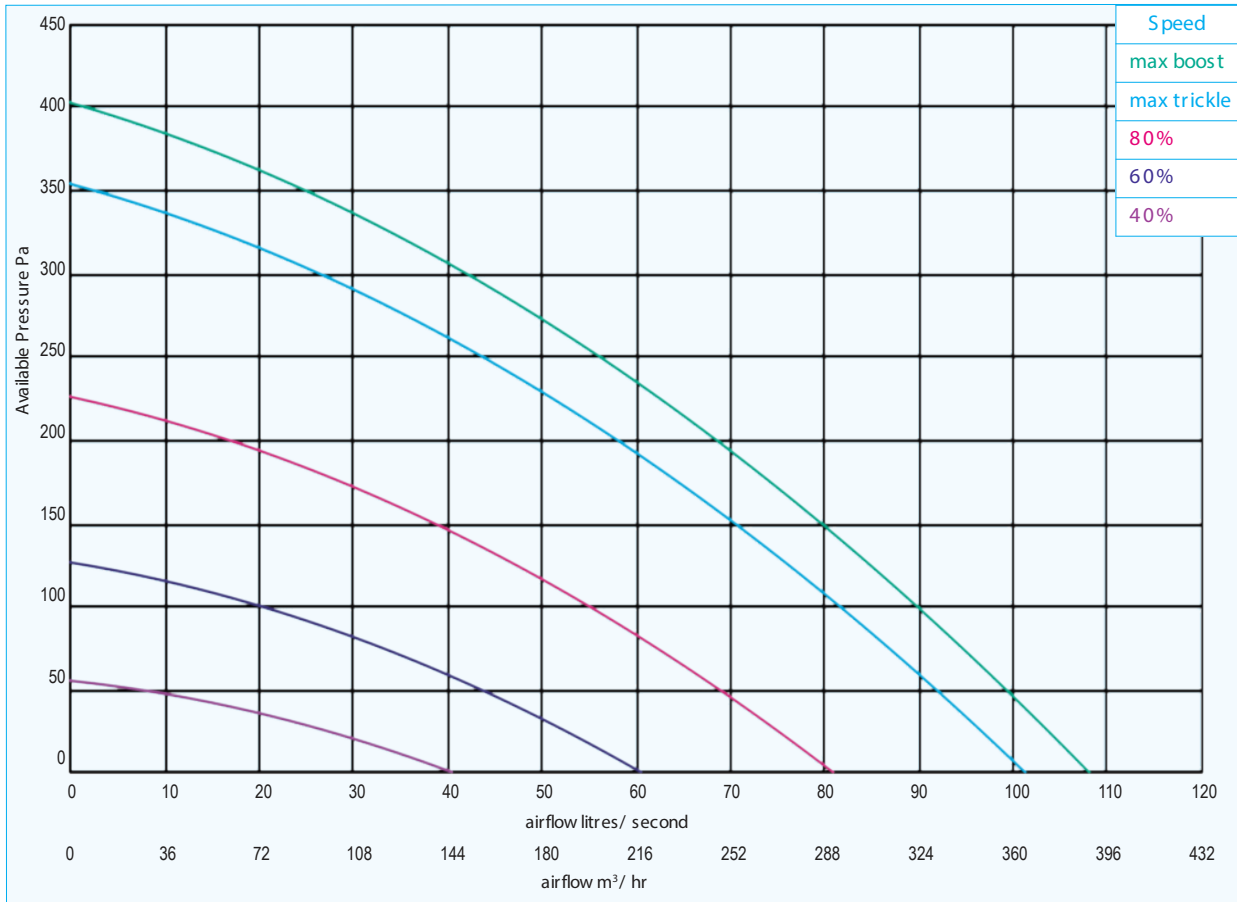
Kair can supply all accessories for use with these units, including product filters, air filter cassettes, silencers, fire dampers, air valves, ducting, outside grilles and wall cowls.

TECHNICAL CHARACTERISTICS											
Model	Airflow l/ sec					Total Power - Watts					Operating Current (Amps)
	Max Boost	Max Trickle	80%	60%	40%	Max Boost	Max Trickle	80%	60%	40%	
Centrex CX125 / CX204	108	101	80	60	40	46	45	26	12	6	0.74

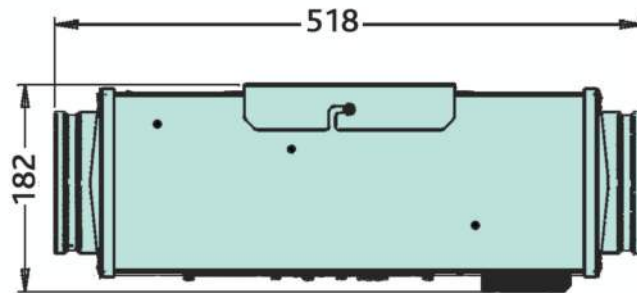
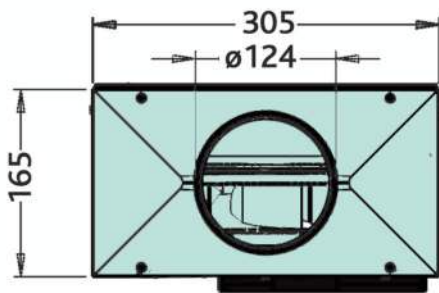
Centrex CX125 / CX204		Sound Power Levels, $L_w$ (dB) - Octave Bands Frequency Hz.								Sound Pressure dBA @3m
Curve Ref		63	125	250	500	1k	2k	4k	8k	
Max Boost (108 l/ sec)	Extract	53	58	59	55	54	52	48	52	28.2
	Supply	58	63	64	60	59	57	53	57	
	Breakout	56	56	51	41	34	26	16	18	
Max Trickle (101 l/ sec)	Extract	52	57	58	54	53	51	46	50	27.2
	Supply	57	62	63	59	58	56	51	55	
	Breakout	55	55	50	40	33	25	14	16	
80% (80 l/ sec)	Extract	48	53	53	49	48	46	40	42	22.5
	Supply	53	58	58	54	53	51	45	47	
	Breakout	51	51	45	35	28	20	8	8	
60% (60 l/ sec)	Extract	45	49	47	43	42	39	32	32	17.4
	Supply	50	54	52	48	47	44	37	37	
	Breakout	48	47	39	29	22	19	<5	<5	
40% (40 l/ sec)	Extract	40	42	40	36	35	31	24	12	10.5
	Supply	45	47	45	41	40	36	29	17	
	Breakout	43	40	32	22	15	5	<5	<5	

The breakout dB(A) sound pressure values are given for hemispherical free field propagation at a distance of 3m from the unit

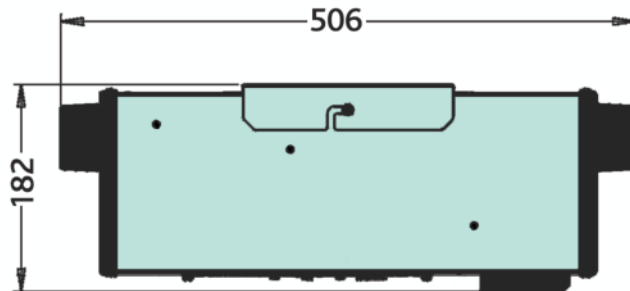
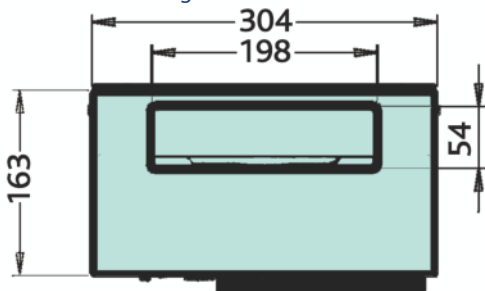
PERFORMANCE (curves are for guidance only)



DIMENSIONS - mm  
Centrex CX125 Range



Centrex CX204 Range



**N.B** sufficient access for safe maintenance or removal following installation, **MUST** be provided for this product - kg 7.

As part of our policy of continuous product development, Kair reserves the right to alter specifications without notice.  
Version: 20220805