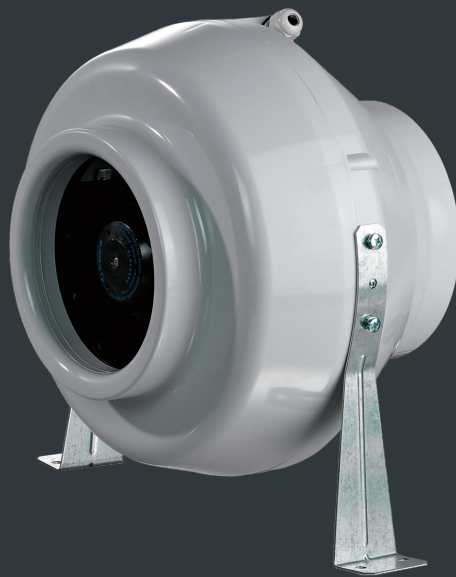




CENTRO

Data sheet Version 1.0



Centro

Inline Centrifugal Fans

USE

- Supply and extract ventilation systems installed in various premises.
- Mounting in kitchens, bathrooms and other humid premises.
- Compatible with Ø100 up to 315 mm round air ducts.



Air flow:
up to 1700 m³/h
472 l/s



Power:
from 61 W



Noise level:
from 36 dBA



DESIGN

- High-quality durable plastic casing.
- Aerodynamically shaped casing.
- Airtight mounting box.
- Centro 150 is compatible with 150 and 160 mm air ducts.

MOTOR

- Single-phase external rotor motor with a centrifugal impeller with backward curved blades.
- Equipped with ball bearings for longer service life.
- Integrated thermal protection with automatic restart.
- Dynamically balanced turbine.
- Some standard sizes have high-powered motors (Centro max).
- For ventilation of premises with high requirements to noise level low-noise modifications are available (Centro L).



MODIFICATIONS AND OPTIONS

- FR: built-in smooth speed controller from 0 to 100 %. The fan is supplied with a pre-wired power cable with IEC plug as a standard. The cable modification with a standard electric plug is also available (FR1).



SPEED CONTROL

- Smooth speed control with a built-in electronic speed controller (option FR).
- Smooth speed control with an external thyristor controller or step speed control with an external auto transformer (both available upon separate order).

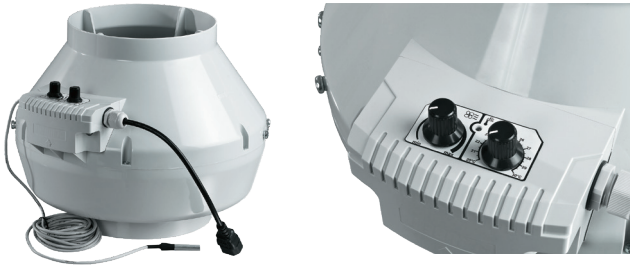
MOUNTING

- Due to compact design the fan is the ideal solution for mounting in limited spaces.
- Any mounting position.
- Wall or ceiling mounting with fixing brackets supplied as a standard or with a wire frame Halter Centro (available upon separate order).
- Flexible air ducts are fixed on the fan spigots with clamps.

- max: high-powered motor.
- L: low-powered motor.
- G: smooth speed controller with an electronic thermostat and an external temperature sensor that is fixed on 4 m power cable. The fan is supplied with a pre-wired power cable with IEC plug as a standard. The cable modification with a standard electric plug is also available (G1).

Accessories

| Silencer | Panel filter | Pocket filter | Electric heater | Water heater | Backdraft air damper | Shutter | Speed controller |
|----------|--------------|---------------|-----------------|--------------|----------------------|---------|------------------|
| | | | | | | | |
| SD | KFBK | KFBT | EKH | WKH | VRV | VK | CDT E1.8 |



- GI: smooth speed controller with an electronic thermostat and a temperature sensor integrated into the air duct. The fan is supplied with a pre-wired power cable with IEC plug as a standard. The cable modification with a standard electric plug is also available (GI1).
- W: the fan is equipped with a pre-wired power cable and IEC plug as a standard. Modification with a standard electric plug is available (W1).

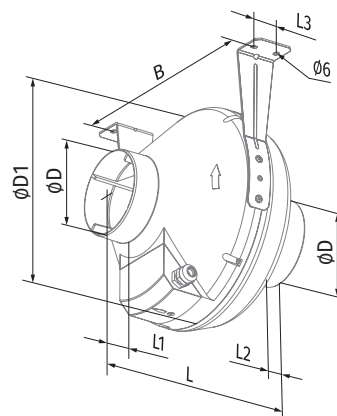
Designation key

| Series | Duct diameter [mm] | Options | Motor modifications |
|--------|----------------------------------|---|---|
| Centro | 100; 125; 150*; 200; 250; 315 | <p>FR: built-in smooth speed controller adjustable from 0 to 100 %. The fan is supplied with a pre-wired cable with IEC plug as a standard.</p> <p>FR1: built-in smooth speed controller adjustable from 0 to 100 %. The fan is supplied with a pre-wired cable with a standard electric plug.</p> <p>G: smooth speed controller with an electronic thermostat and an external temperature sensor that is fixed on 4 m cable. The fan is supplied with a pre-wired cable with IEC plug as a standard.</p> <p>GI1: smooth speed controller with an electronic thermostat and an external temperature sensor that is fixed on 4 m cable. The fan is supplied with a pre-wired power cable with a standard plug.</p> <p>GI: smooth speed controller with an electronic thermostat and a temperature sensor integrated into the air duct. The fan is supplied with a pre-wired power cable with IEC plug as a standard.</p> <p>GI1: smooth speed controller with an electronic thermostat and a temperature sensor integrated into the air duct. The fan is supplied with a pre-wired power cable with a standard electric plug.</p> <p>W: the fan is equipped with a pre-wired power cable and IEC plug as a standard.</p> <p>W1: the fan is equipped with a pre-wired power cable and a standard electric plug.</p> | <p>max: high-powered motor;</p> <p>L: low-powered motor</p> |

* Centro model is compatible with the air ducts both Ø 150 and 160 mm

OVERALL DIMENSIONS [mm]

| Type | ØD | ØD1 | B | L | L1 | L2 | L3 | Weight [kg] |
|---------------------------|-----------|-----|-----|-----|----|----|----|-------------|
| Centro 100 L / Centro 100 | 100 | 250 | 270 | 230 | 30 | 27 | 30 | 2.08 |
| Centro 125 L / Centro 125 | 125 | 250 | 270 | 220 | 30 | 27 | 30 | 2.20 |
| Centro 150 | 150 / 160 | 300 | 310 | 286 | 30 | 30 | 30 | 2.45 |
| Centro 200 | 200 | 340 | 354 | 276 | 30 | 30 | 40 | 3.00 |
| Centro 200 max | 200 | 340 | 354 | 276 | 30 | 30 | 40 | 3.00 |
| Centro 250 L / Centro 250 | 250 | 340 | 354 | 265 | 30 | 30 | 40 | 4.30 |
| Centro 315 | 315 | 400 | 414 | 276 | 40 | 55 | 40 | 4.85 |
| Centro 315 max | 315 | 400 | 414 | 276 | 40 | 55 | 40 | 4.85 |

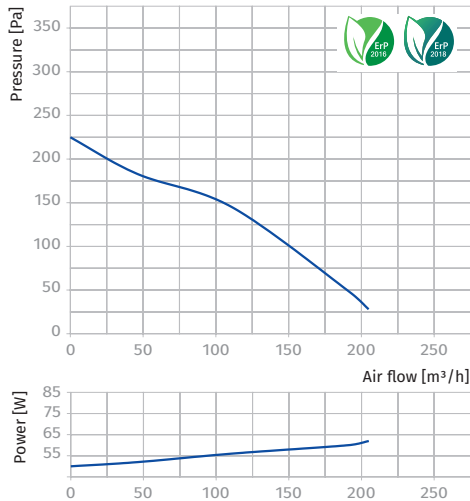


| Parameters | Centro 100 L | Centro 100 | Centro 125 L | Centro 125 |
|----------------------------------|--------------|------------|--------------|------------|
| Voltage [V / 50-60 Hz] | 1 ~ 230 | 1 ~ 230 | 1 ~ 230 | 1 ~ 230 |
| Power [W] | 62 | 80 | 61 | 79 |
| Current [A] | 0.38 | 0.34 | 0.38 | 0.34 |
| Maximum air flow [m³/h (l/s)] | 205 (57) | 250 (69) | 260 (72) | 355 (99) |
| RPM [min ⁻¹] | 2650 | 2820 | 2610 | 2800 |
| Sound pressure at 3 m [dBA] | 36 | 40 | 36 | 40 |
| Transported air temperature [°C] | -25...+55 | -25...+55 | -25...+55 | -25...+55 |
| SEC class | C | C | C | B |
| Ingress protection rating | IPX4 | IPX4 | IPX4 | IPX4 |
| Motor IP rating | IP44 | IP44 | IP44 | IP44 |
| ErP | 2016, 2018 | 2016, 2018 | 2016, 2018 | 2016, 2018 |

CENTRO 100 L

Sound power level, A-filter applied

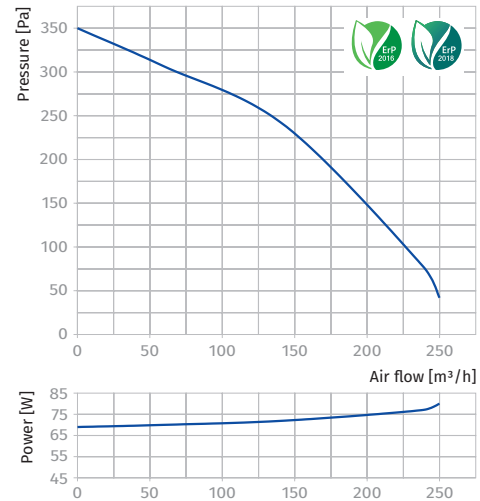
| Sound power level, A-weighted | Gen. | Octave frequency band [Hz] | | | | | | | | LpA, 3 m [dBA] | LpA, 1 m [dBA] |
|-------------------------------|-----------|----------------------------|-----|-----|-----|------|------|------|------|----------------|----------------|
| | | 63 | 125 | 250 | 500 | 1000 | 2000 | 4000 | 8000 | | |
| LWA to inlet [dBA] | 77 | 55 | 69 | 75 | 67 | 62 | 58 | 52 | 42 | 56 | 66 |
| LWA to outlet [dBA] | 76 | 62 | 69 | 74 | 66 | 59 | 55 | 51 | 40 | 55 | 65 |
| LWA to environment [dBA] | 57 | 26 | 45 | 47 | 51 | 52 | 49 | 40 | 31 | 36 | 46 |



CENTRO 100

Sound power level, A-filter applied

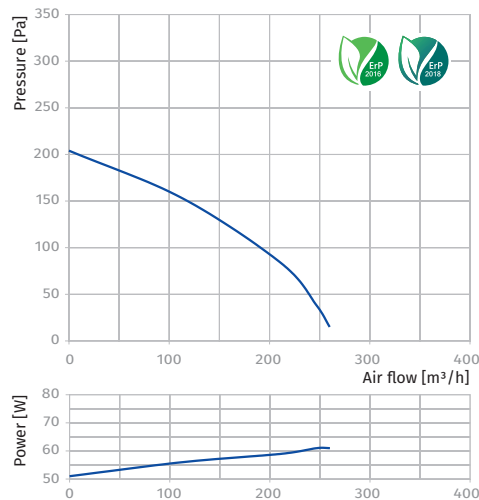
| Sound power level, A-weighted | Gen. | Octave frequency band [Hz] | | | | | | | | LpA, 3 m [dBA] | LpA, 1 m [dBA] |
|-------------------------------|-----------|----------------------------|-----|-----|-----|------|------|------|------|----------------|----------------|
| | | 63 | 125 | 250 | 500 | 1000 | 2000 | 4000 | 8000 | | |
| LWA to inlet [dBA] | 83 | 60 | 75 | 81 | 73 | 67 | 63 | 57 | 46 | 62 | 72 |
| LWA to outlet [dBA] | 82 | 67 | 75 | 80 | 72 | 64 | 60 | 55 | 44 | 61 | 71 |
| LWA to environment [dBA] | 61 | 28 | 49 | 51 | 55 | 57 | 53 | 44 | 34 | 40 | 50 |



CENTRO 125 L

Sound power level, A-filter applied

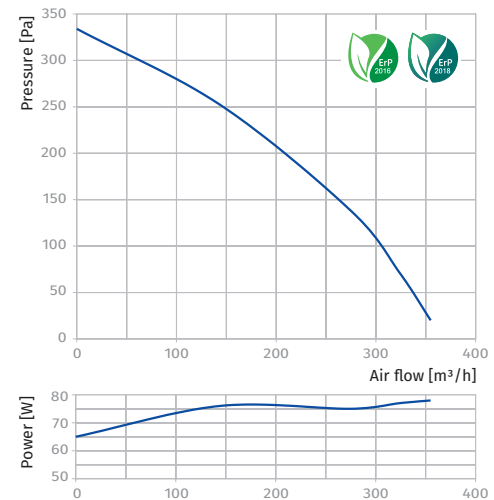
| Sound power level, A-weighted | Gen. | Octave frequency band [Hz] | | | | | | | | LpA, 3 m [dBA] | LpA, 1 m [dBA] |
|-------------------------------|-----------|----------------------------|-----|-----|-----|------|------|------|------|----------------|----------------|
| | | 63 | 125 | 250 | 500 | 1000 | 2000 | 4000 | 8000 | | |
| LWA to inlet [dBA] | 78 | 52 | 70 | 76 | 67 | 63 | 60 | 55 | 46 | 57 | 67 |
| LWA to outlet [dBA] | 77 | 59 | 70 | 75 | 66 | 60 | 58 | 53 | 45 | 56 | 66 |
| LWA to environment [dBA] | 56 | 27 | 40 | 48 | 51 | 50 | 50 | 40 | 28 | 36 | 46 |



CENTRO 125

Sound power level, A-filter applied

| Sound power level, A-weighted | Gen. | Octave frequency band [Hz] | | | | | | | | LpA, 3 m [dBA] | LpA, 1 m [dBA] |
|-------------------------------|-----------|----------------------------|-----|-----|-----|------|------|------|------|----------------|----------------|
| | | 63 | 125 | 250 | 500 | 1000 | 2000 | 4000 | 8000 | | |
| LWA to inlet [dBA] | 84 | 56 | 76 | 82 | 72 | 68 | 65 | 59 | 50 | 63 | 73 |
| LWA to outlet [dBA] | 83 | 63 | 76 | 81 | 71 | 65 | 62 | 57 | 49 | 62 | 72 |
| LWA to environment [dBA] | 60 | 29 | 44 | 52 | 55 | 54 | 54 | 44 | 31 | 40 | 50 |

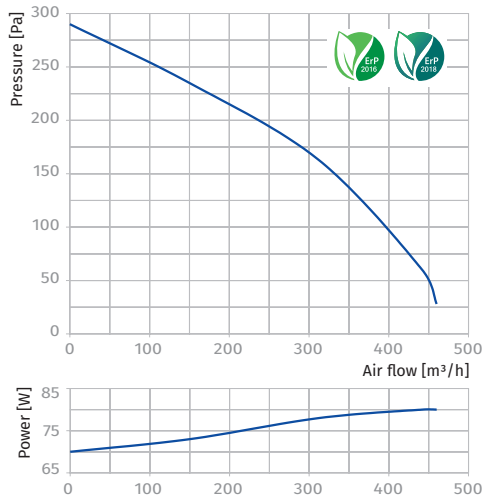


| Parameters | Centro 150 | Centro 200 | Centro 200 max | Centro 250 L |
|----------------------------------|------------|------------|----------------|--------------|
| Voltage [V / 50-60 Hz] | 1 ~ 230 | 1 ~ 230 | 1 ~ 230 | 1 ~ 230 |
| Power [W] | 80 | 107 | 173 | 108 |
| Current [A] | 0.35 | 0.47 | 0.76 | 0.47 |
| Maximum air flow [m³/h (l/s)] | 460 (128) | 780 (217) | 930 (258) | 865 (240) |
| RPM [min ⁻¹] | 2725 | 2660 | 2125 | 2560 |
| Sound pressure at 3 m [dBA] | 42 | 46 | 48 | 47 |
| Transported air temperature [°C] | -25...+55 | -25...+50 | -25...+45 | -25...+50 |
| SEC class | B | B | B | B |
| Ingress protection rating | IPX4 | IPX4 | IPX4 | IPX4 |
| Motor IP rating | IP44 | IP44 | IP44 | IP44 |
| ErP | 2016, 2018 | 2016, 2018 | 2016, 2018 | 2016, 2018 |

CENTRO 150

Sound power level, A-filter applied

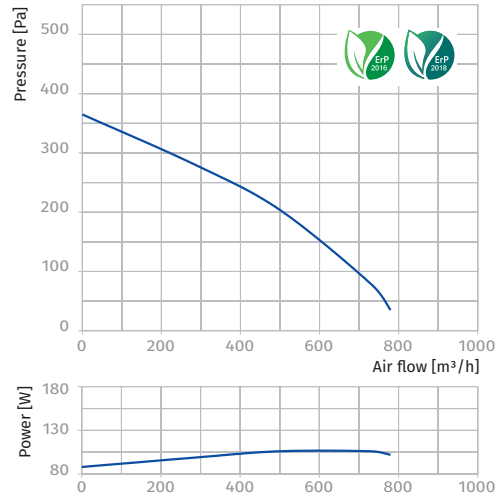
| Sound power level, A-weighted | Gen. | Octave frequency band [Hz] | | | | | | | | LpA, 3 m [dBA] | LpA, 1 m [dBA] |
|-------------------------------|-----------|----------------------------|-----|-----|-----|------|------|------|------|----------------|----------------|
| | | 63 | 125 | 250 | 500 | 1000 | 2000 | 4000 | 8000 | | |
| LWA to inlet [dBA] | 90 | 53 | 87 | 86 | 75 | 74 | 71 | 68 | 54 | 69 | 79 |
| LWA to outlet [dBA] | 90 | 53 | 88 | 85 | 72 | 71 | 66 | 65 | 52 | 69 | 79 |
| LWA to environment [dBA] | 63 | 26 | 46 | 55 | 57 | 57 | 57 | 47 | 35 | 42 | 52 |



CENTRO 200

Sound power level, A-filter applied

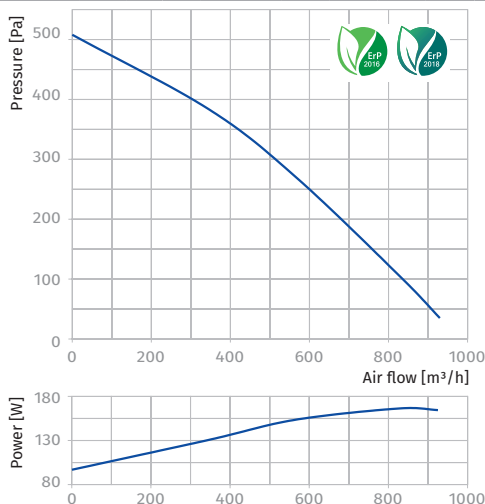
| Sound power level, A-weighted | Gen. | Octave frequency band [Hz] | | | | | | | | LpA, 3 m [dBA] | LpA, 1 m [dBA] |
|-------------------------------|-----------|----------------------------|-----|-----|-----|------|------|------|------|----------------|----------------|
| | | 63 | 125 | 250 | 500 | 1000 | 2000 | 4000 | 8000 | | |
| LWA to inlet [dBA] | 85 | 47 | 74 | 81 | 77 | 77 | 78 | 70 | 59 | 65 | 75 |
| LWA to outlet [dBA] | 83 | 44 | 73 | 77 | 75 | 75 | 78 | 70 | 60 | 63 | 73 |
| LWA to environment [dBA] | 66 | 27 | 48 | 59 | 61 | 61 | 59 | 51 | 39 | 46 | 56 |



CENTRO 200 MAX

Sound power level, A-filter applied

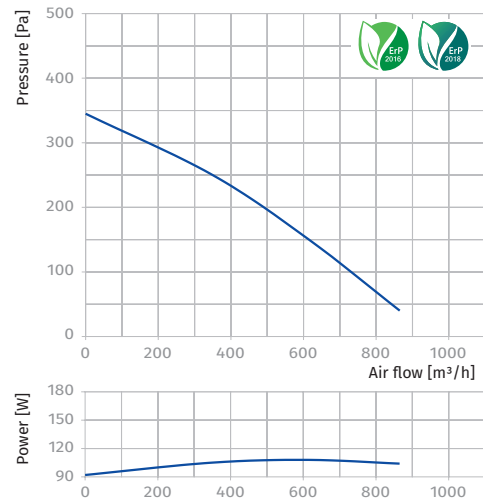
| Sound power level, A-weighted | Gen. | Octave frequency band [Hz] | | | | | | | | LpA, 3 m [dBA] | LpA, 1 m [dBA] |
|-------------------------------|-----------|----------------------------|-----|-----|-----|------|------|------|------|----------------|----------------|
| | | 63 | 125 | 250 | 500 | 1000 | 2000 | 4000 | 8000 | | |
| LWA to inlet [dBA] | 90 | 49 | 78 | 87 | 81 | 81 | 82 | 74 | 63 | 69 | 79 |
| LWA to outlet [dBA] | 87 | 46 | 77 | 81 | 79 | 79 | 82 | 74 | 64 | 67 | 77 |
| LWA to environment [dBA] | 68 | 29 | 52 | 60 | 63 | 63 | 62 | 53 | 39 | 48 | 58 |



CENTRO 250 L

Sound power level, A-filter applied

| Sound power level, A-weighted | Gen. | Octave frequency band [Hz] | | | | | | | | LpA, 3 m [dBA] | LpA, 1 m [dBA] |
|-------------------------------|-----------|----------------------------|-----|-----|-----|------|------|------|------|----------------|----------------|
| | | 63 | 125 | 250 | 500 | 1000 | 2000 | 4000 | 8000 | | |
| LWA to inlet [dBA] | 89 | 53 | 76 | 74 | 78 | 84 | 85 | 80 | 70 | 69 | 79 |
| LWA to outlet [dBA] | 89 | 56 | 68 | 78 | 75 | 83 | 86 | 79 | 71 | 68 | 78 |
| LWA to environment [dBA] | 68 | 36 | 50 | 60 | 63 | 62 | 61 | 56 | 42 | 47 | 57 |

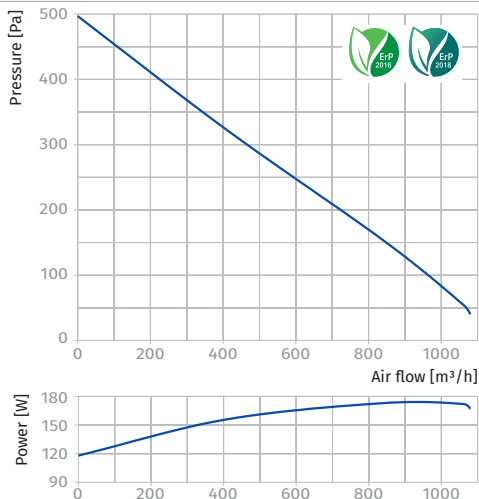


| Parameters | Centro 250 | Centro 315 | Centro 315 max |
|--|------------|------------|----------------|
| Voltage [V / 50 Hz] | 1 ~ 230 | 1 ~ 230 | 1 ~ 230 |
| Power [W] | 173 | 200 | 310 |
| Current [A] | 0.76 | 0.88 | 1.36 |
| Maximum air flow [m ³ /h (l/s)] | 1080 (300) | 1340 (372) | 1700 (472) |
| RPM [min ⁻¹] | 2090 | 2655 | 2590 |
| Sound pressure at 3 m [dBA] | 49 | 48 | 57 |
| Transported air temperature [°C] | -25...+50 | -25...+50 | -25...+45 |
| SEC class | B | - | - |
| Ingress protection rating | IPX4 | IPX4 | IPX4 |
| Motor IP rating | IP44 | IP44 | IP44 |
| ErP | 2016, 2018 | 2016, 2018 | 2016, 2018 |

CENTRO 250

Sound power level, A-filter applied

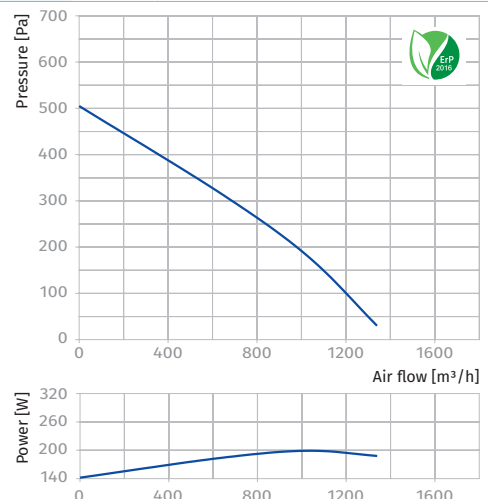
| Sound power level, A-weighted | Gen. | Octave frequency band [Hz] | | | | | | | | LpA, 3 m [dBA] | LpA, 1 m [dBA] |
|-------------------------------|-----------|----------------------------|-----|-----|-----|------|------|------|------|----------------|----------------|
| | | 63 | 125 | 250 | 500 | 1000 | 2000 | 4000 | 8000 | | |
| LWA to inlet [dBA] | 90 | 61 | 78 | 85 | 83 | 85 | 81 | 77 | 65 | 70 | 80 |
| LWA to outlet [dBA] | 88 | 64 | 77 | 73 | 82 | 84 | 82 | 77 | 63 | 68 | 78 |
| LWA to environment [dBA] | 69 | 35 | 49 | 61 | 64 | 64 | 62 | 50 | 39 | 49 | 59 |



CENTRO 315

Sound power level, A-filter applied

| Sound power level, A-weighted | Gen. | Octave frequency band [Hz] | | | | | | | | LpA, 3 m [dBA] | LpA, 1 m [dBA] |
|-------------------------------|-----------|----------------------------|-----|-----|-----|------|------|------|------|----------------|----------------|
| | | 63 | 125 | 250 | 500 | 1000 | 2000 | 4000 | 8000 | | |
| LWA to inlet [dBA] | 86 | 51 | 73 | 71 | 75 | 81 | 82 | 77 | 68 | 66 | 76 |
| LWA to outlet [dBA] | 87 | 55 | 66 | 76 | 73 | 81 | 84 | 77 | 69 | 66 | 76 |
| LWA to environment [dBA] | 69 | 30 | 48 | 59 | 63 | 65 | 62 | 52 | 38 | 48 | 58 |



CENTRO 315 MAX

Sound power level, A-filter applied

| Sound power level, A-weighted | Gen. | Octave frequency band [Hz] | | | | | | | | LpA, 3 m [dBA] | LpA, 1 m [dBA] |
|-------------------------------|-----------|----------------------------|-----|-----|-----|------|------|------|------|----------------|----------------|
| | | 63 | 125 | 250 | 500 | 1000 | 2000 | 4000 | 8000 | | |
| LWA to inlet [dBA] | 93 | 56 | 80 | 78 | 82 | 88 | 89 | 84 | 74 | 73 | 83 |
| LWA to outlet [dBA] | 93 | 59 | 72 | 82 | 79 | 87 | 90 | 83 | 75 | 72 | 82 |
| LWA to environment [dBA] | 78 | 33 | 54 | 63 | 71 | 73 | 73 | 63 | 55 | 57 | 67 |

