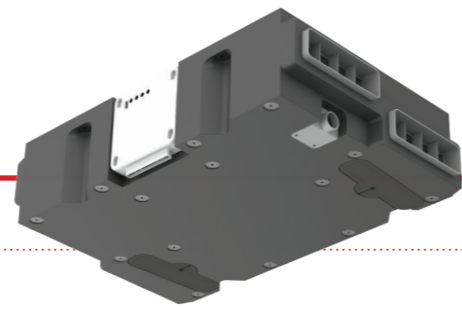


# HRX-aQ



## Efficient

### Ultimate performance

Whilst the HRX-aQ is the most compact MVHR ceiling unit, its energy efficient performance has not been comprised. Providing Specific Fan Powers as low as 0.66 W/(l/s) and a heat exchange efficiency up to 88%, the unit will efficiently lower Dwelling Emission Rates for a higher SAP rating.

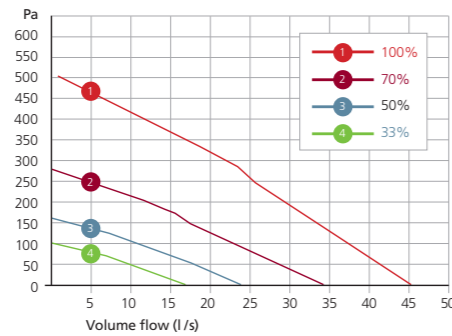
**Note:** Specific Fan Power combined with heat exchange efficiency is how MVHR units are measured and used towards calculating overall system performance.

### Unit performance

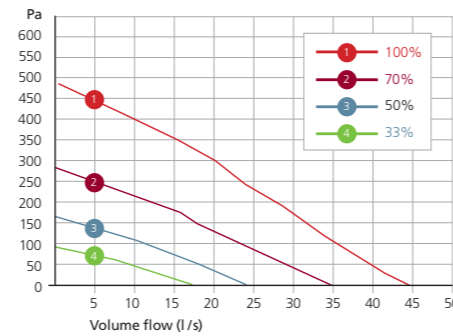
By selecting a 'Total Heat' exchanger, rather than a standard heat exchanger, the unit will become an Energy Recovery Ventilation (ERV) system. For 'Total Heat' exchanger performance figures, please email [vent.technical@domusventilation.com](mailto:vent.technical@domusventilation.com)

For more information, please go to [www.bluebrain.co.uk](http://www.bluebrain.co.uk)

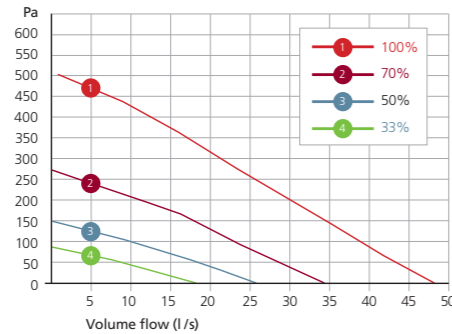
AQH200-S / AQH200E-S



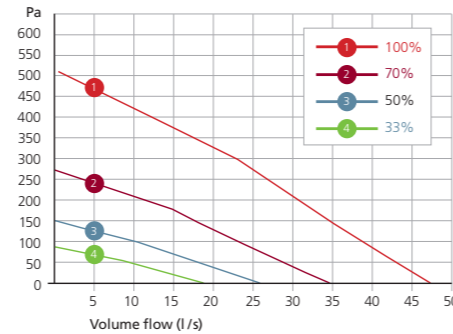
AQH200-B / AQH200E-B



AQH240-S / AQH240E-S



AQH240-B / AQH240E-B



200mm DEEP MODELS				240mm DEEP MODELS			
-------------------	--	--	--	-------------------	--	--	--

### TYPICAL INSTALLATION

Code	Bypass	Kitchen + 1 wetroom		Kitchen + 2 wetrooms		Code	Bypass	Kitchen + 1 wetroom		Kitchen + 2 wetrooms	
		SFP W/(l/s)	HE %	SFP W/(l/s)	HE %			SFP W/(l/s)	HE %	SFP W/(l/s)	HE %
AQH200-S	✗	0.67		0.77		AQH240-S	✗	0.68		0.73	
AQH200-B	✓	0.74		0.83		AQH240-B	✓	0.69		0.73	

### PRODUCT CHARACTERISTICS DATABASE (SAP 2012)

Code	Bypass	Kitchen + 1 wetroom		Kitchen + 2 wetrooms		Code	Bypass	Kitchen + 1 wetroom		Kitchen + 2 wetrooms	
		SFP W/(l/s)	HE %	SFP W/(l/s)	HE %			SFP W/(l/s)	HE %	SFP W/(l/s)	HE %
AQH200-S	✗	0.72	87	0.88	84	AQH240-S	✗	0.69	88	0.84	85
AQH200-B	✓	0.75	83	0.95	81	AQH240-B	✓	0.69	86	0.84	83

### PRODUCT CHARACTERISTICS DATABASE (SAP 2009)

Code	Bypass	Kitchen + 1 wetroom		Kitchen + 2 wetrooms		Code	Bypass	Kitchen + 1 wetroom		Kitchen + 2 wetrooms	
		SFP W/(l/s)	HE %	SFP W/(l/s)	HE %			SFP W/(l/s)	HE %	SFP W/(l/s)	HE %
AQH200-S	✗	0.68	87	0.70	87	AQH240-S	✗	0.66	88	0.68	88
AQH200-B	✓	0.70	83	0.73	83	AQH240-B	✓	0.66	86	0.68	86

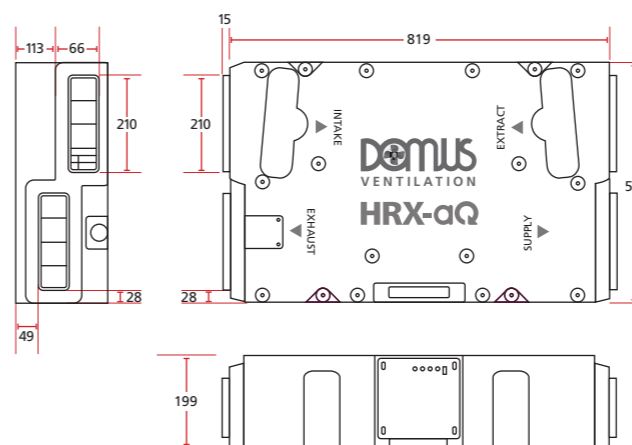
## Sound

SOUND PERFORMANCE														
Codes	Speed Control Setting	Flow Rate (l/s)	Pressure (Pa)	Power (W)	Position	Sound Power Levels dB re 1pW								Sound Pressure (dB(A) @ 3m)
						63	125	250	500	1K	2K	4K	8K	
Test - Duty Points						63	125	250	500	1K	2K	4K	8K	
AQH200-S & AQH200E-S	99%	38	96	52	Breakout	46	55	54	62	53	44	41	34	44
	70%	27	47	22	Breakout	40	50	54	50	42	39	34	21	34
	50%	21	28	15	Breakout	*	46	53	43	38	37	31	12	30
	33%	15	16	10	Breakout	*	41	46	39	34	35	26	6	25
AQH200-B & AQH200E-B	99%	37	83	52	Breakout	49	57	55	59	51	44	42	33	41
	70%	27	40	20	Breakout	43	49	55	53	41	36	32	21	35
	50%	21	23	15	Breakout	48	44	53	46	36	30	24	11	30
	33%	15	13	10	Breakout	46	40	47	40	32	27	17	3	24
AQH240-S & AQH240E-S	99%	39	96	52	Breakout	45	54	53	60	53	44	41	32	42
	70%	27	65	21	Breakout	45	48	53	53	41	37	32	21	35
	50%	21	34	14	Breakout	44	44	52	46	36	33	26	12	30
	33%	15	19	10	Breakout	44	39	44	41	35	31	23	4	25
AQH240-B & AQH240E-B	99%	39	96	52	Breakout	48	54	56	60	54	44	41	33	42
	70%	27	65	21	Breakout	*	49	53	53	41	37	33	20	35
	50%	21	34	14	Breakout	*	42	51	45	36	34	26	10	29
	33%	15	19	10	Breakout	*	*	48	39	33	32	20	2	25

\*Noise not normally heard by the human ear.

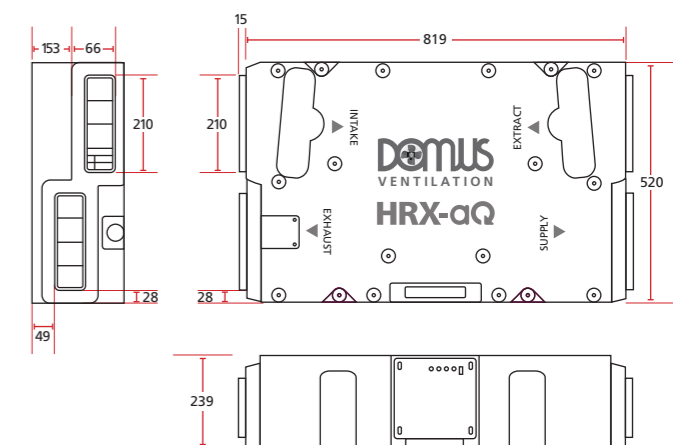
## Dimensional drawings

AQH200 models



Measurements in mm  
Weight: 7.9Kg (1.2st)

AQH240 models



Measurements in mm  
Weight: 8.4 kg (1.3st)