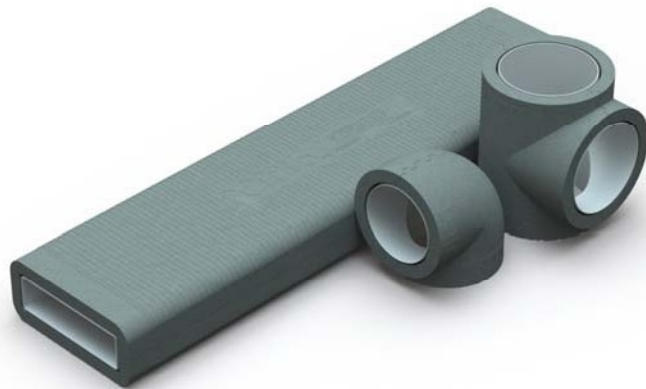


Polypipe Ventilation Specification Text

for
Domus Thermal
Duct Insulation System

Issue 1



AVAILABLE NOW FROM

i-sells.co.uk



Showroom:

2 St John's Parade
Sidcup High Street
DA14 6ES

EMAIL: sales@i-sells.co.uk

SALES: 020 8463 9696

FAX: 08456 44 60 02

WEB: <http://www.i-sells.co.uk>



Scope of Works

Standard – England and Wales

Insulation shall be applied to ventilation ducting where it passes through unheated areas and voids; for example, loft spaces, in accordance with the requirements of the Domestic Ventilation Compliance Guide: 2010 edition.

Domestic Ventilation Compliance Guide 2010 edition specific references are:

Table 1, section 1.0, Installation – ducted, paragraph e; Table 3, section 1.0, Installation, paragraph f; Table 5, section 2.0, Duct Installation – general notes, paragraph e; Table 5, section 2.0, Duct Installation – general notes, paragraph e.

Standard – Scotland

Insulation shall be applied to ventilation ducting where it passes through unheated areas and voids, for example, loft spaces, in accordance with the requirements of version 1 – 2010 of Domestic Ventilation of the Building Standards Division.

Version 1 – 2010 of Domestic Ventilation of the Building Standards Division specific references are:

Clause 5.12 for passive stack ventilation and clause 9.1c for all types of ducted mechanical ventilation.

Specific Scope of Works for Exhaust Air Heat Pumps (EAHP)

Insulation shall be applied to all ventilation ducting where it passes through unheated areas and voids; for example, loft spaces, in accordance with the requirements of the Domestic Ventilation Compliance Guide: 2010 edition.

Additionally, insulation shall be applied to all exhaust air ducting regardless of location.

Typical Specification

Duct insulation shall be applied to ventilation ducting where it passes through unheated areas and voids; for example, loft spaces, in accordance with the requirements of the Domestic Ventilation Compliance Guide: 2010 edition.

Insulated ducting shall be supported at every joint and metre run using coated steel banding.

For further information please contact Polypipe Ventilation's Technical Support Team on: **08443 715 523**.

Manufacturer

Polypipe Ventilation

Product Range

Domus Thermal

Insulation Properties

Thermal conductivity = $\leq 0.03 \text{ W/(m.K)}$

Thermal resistance at 20mm = $\leq 0.666 \text{ K/W}$

Material

Injection moulded, carbon impregnated Expanded Polystyrene (EPS)

Density = 25kg/m³

Colour - Silver/Grey

Size

Wall thickness 20mm and 22.25mm*

Components to suit 100mm internal diameter Domus EasiPipe system

Components to suit 125mm internal diameter Domus EasiPipe system

Components to suit 150mm internal diameter Domus EasiPipe system

Components to suit 204mm x 60mm Domus Supertube system

*22.25mm wall thickness only applies to 1m lengths of 204mm x 60mm

Environmental Impact

Ozone Depletion Potential (ODP) = 0

Global Warming Potential (GWP) = <5




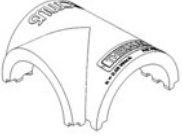
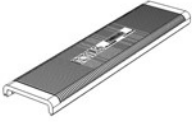


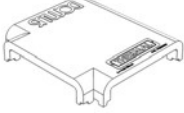
Fire Resistance

Flame retardant to Class E of EN13163

Accessories

12mm x 0.8mm x 10m White powder-coated pre-galvanised perforated steel banding

Range Details:

	TS1100-4	Ø100mm round pipe insulation 1m
	TS1100-5	Ø125mm round pipe insulation 1m
	TS1100-6	Ø150mm round pipe insulation 1m
	TS490	Ø100mm round 90° bend insulation
	TS590	Ø125mm round 90° bend insulation
	TS690	Ø150mm round 90° bend insulation
	TS491	Ø100mm round 45° bend insulation
	TS591	Ø125mm round 45° bend insulation
	TS492	Ø100mm round equal T piece insulation
	TS592	Ø125mm round equal T piece insulation
	TS692	Ø150mm round equal T piece insulation
	TS510	204 x 60mm Channel insulation 1m
	TS550	204 x 60mm Horizontal 90° insulation
	TS555	204 x 60mm Horizontal 45° insulation
	TS582	204 x 60mm Horizontal T piece insulation

AVAILABLE NOW FROM

i-sells.co.uk

