



Description

Valve for supply air.
Designed for ceiling mounting.
Bayonet holders connect to socket VRGU, VRGL or VRGM.

Materials and finish

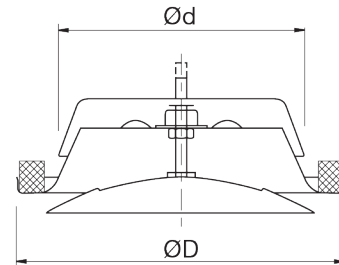
Material

Powder-coated galvanized sheet metal.

Colour

White RAL 9003, gloss 30 or white RAL 9010 gloss30.
Dim 80 only available in RAL 9003.

Dimensions



Ød nom	ØD [mm]	m [kg]
80	111	0,14
100	130	0,21
125	160	0,30
150	190	0,39
160	190	0,41
200	245	0,65

Ordering example

Product	KI	125
Dimension Ød		

Technical data

Air flow, q [l/s] and [m³/h], total pressure drop, Δp_t [Pa], throw length, $l_{0,2}$ [m], and A-weighted sound power level, L_{WA} [dB], for different settings, a [mm], are shown in the graphs.

Sound power level, L_{Wok} [dB], in octave bands

is calculated as $L_{WA} + K_{ok}$.
 K_{ok} is found in the table below.

Ød nom	Valve mounted in	Centre frequency [Hz]							
		63	125	250	500	1K	2K	4K	8K
80	Duct	-	2	2	-1	-6	-14	-25	-37
100	Duct	-	2	2	-1	-6	-14	-25	-37
125	Duct	-	2	4	-2	-7	-14	-25	-37
160	Duct	-	6	5	-3	-9	-14	-26	-36
200	Duct	-	5	5	-2	-8	-16	-24	-36

Tolerance	-	±3	±2	±2	±2	±2	±2	±2	±3
-----------	---	----	----	----	----	----	----	----	----

Sound attenuation, ΔL , [dB]

Ød nom	Valve mounted in	Setting a [mm]	Centre frequency [Hz]							
			63	125	250	500	1K	2K	4K	8K
80	Duct	2	26	20	15	14	11	8	10	9
		6	24	19	13	11	8	5	8	6
		12	24	19	13	10	6	4	5	6
100	Duct	2	22	19	14	12	11	12	10	12
		6	22	17	11	9	8	9	6	9
		12	22	17	11	8	6	7	4	7
125	Duct	3	20	17	12	11	9	9	8	8
		7	19	15	10	8	7	7	5	5
160	Duct	4	18	14	10	10	10	10	8	8
		9	18	13	9	8	7	7	6	6
200	Duct	20	18	13	8	7	6	5	5	5
		5	17	13	10	9	11	10	9	9
		9	16	12	8	8	9	9	8	7
		20	15	11	7	6	7	6	7	6

Tolerance	±6	±3	±2	±2	±2	±2	±2	±2	±3
-----------	----	----	----	----	----	----	----	----	----

Measurement of air flow

Data is available in a separate brochure.

