

# Centrex - CX125 Range

## INLINE CENTRAL EXTRACT UNIT - MECHANICAL EXTRACT VENTILATION (MEV)



- efficient, low energy solution to controlling condensation and pollution in residential properties up to 185m<sup>2</sup>
- variable choice of low (trickle), boost and purge speed at installation
- for ceiling, loft or void installation
- compact, ultra low profile unit
- requires only one discharge grille
- 3 extract spigots for extra efficiency
- low noise levels
- low running costs
- humidistat model available
- complies with Building Regulations Parts L1A 2013 and F 2013
- manufactured in UK to ISO 9001

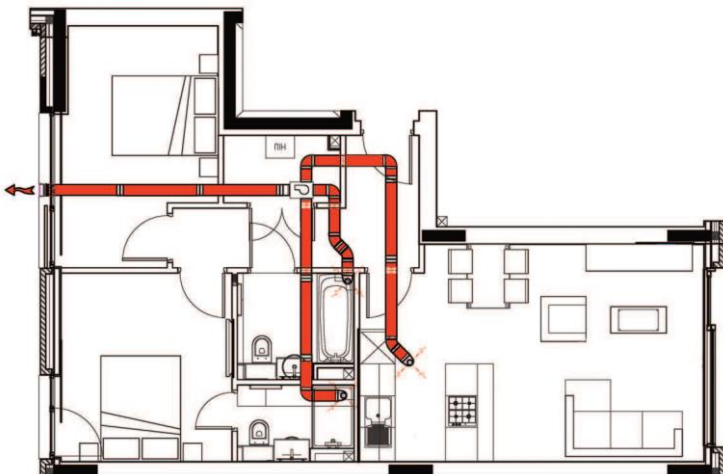
### GENERAL FEATURES

- up to 97 litre/sec at 50Pa - max 108 litre/sec capacity
- sfp down to 0.20 W//s
- easy and economical to install and maintain
- for ceiling, loft or void in-line installation
- can be angled horizontally or vertically
- variable low (trickle), boost and purge options - purge option factory set
- boost speed can be activated by a 230V switched live from:
  - A light switch (if more than one light switch is used, each one must be a double pole switch)
  - Remote humidistat (230V - DRH240)
  - Passive infrared (230V - PIRFF)
  - Thermostat (230V - THM)
  - Remote switch/pull cord - 230V
- very low noise levels
- low running costs
- 2 year warranty

### TECHNICAL FEATURES

- compact, low profile unit
- casing from galvanised sheet steel
- thermal overload protection
- pre-wired for easy electrical connection
- service and maintenance panel easily accessible
- low energy EC external rotor motor with sealed for life bearings and dynamically balanced backward curved impellers
- operates in temperature up to 60°C
- complete with mounting bracket and anti-vibration plate
- IPX4 rated

### TYPICAL INSTALLATION



### CONTROL FEATURES

- variable adjustment - trickle, boost and purge speeds set at installation (purge option factory set)
- boost setting (via switched live)
- integral, adjustable over-run timer - adjustable from 0-30 minutes set at installation

### COMPLIES WITH

- Part L1A 2013 of Building Regulations for enhanced energy saving capability
- Part F 2013 of Building Regulations for reliable, efficient ventilation
- EU RoHS Directive Compliant.
- Complies with IEC60335-2-80, LVD2006/95/CE and EMC2014/30/UE (European Directive against radio interference and electro-magnetic compatibility)
- manufactured in UK to ISO 9001
- CE / UKCA marked



### MODELS AVAILABLE:

- CX125TM - 4 spigots with integral timer
- CX125HTM - 4 spigots with integral timer & humidistat
- H = Humidity
- T = Timer
- M = Multi Spigot - 3 extract and 1 discharge

Kair can supply all accessories for use with these units, including product filters, air filter cassettes, silencers, fire dampers, air valves, ducting, outside grilles and wall cowls.

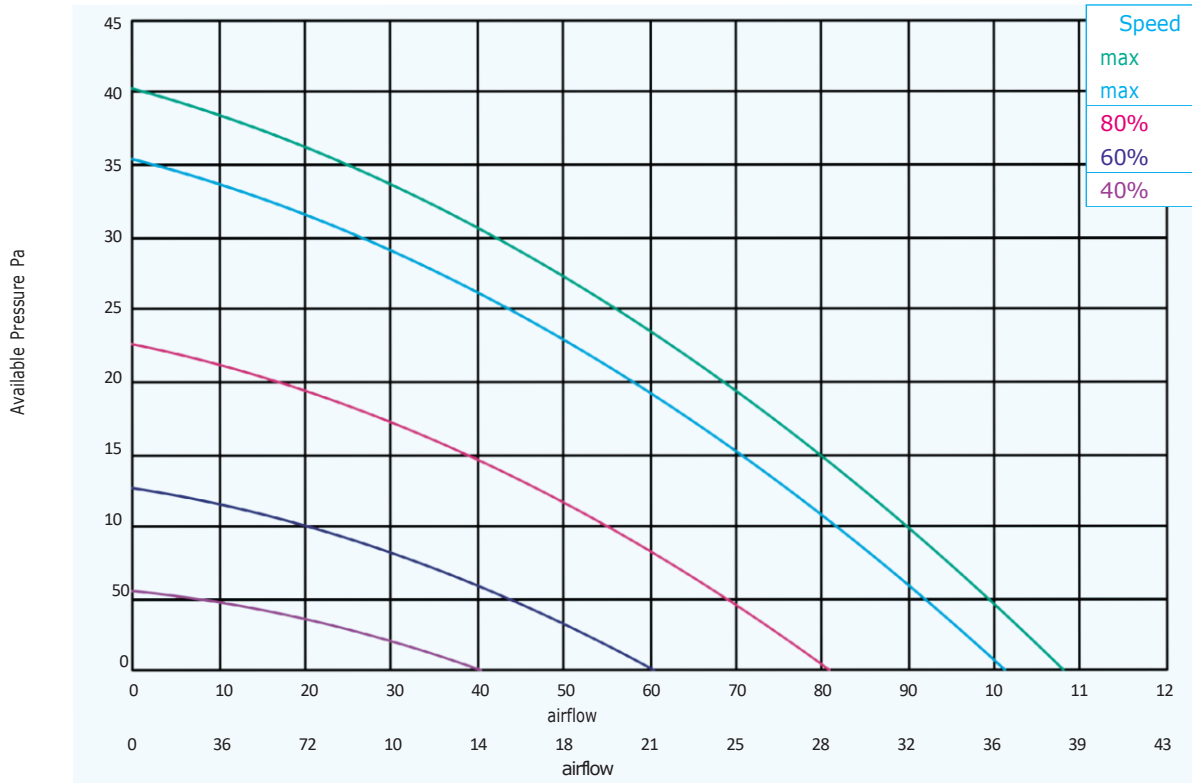
| TECHNICAL CHARACTERISTICS |               |             |     |     |     |                     |             |     |     |     |                          |
|---------------------------|---------------|-------------|-----|-----|-----|---------------------|-------------|-----|-----|-----|--------------------------|
| Model                     | Airflow l/sec |             |     |     |     | Total Power - Watts |             |     |     |     | Operating Current (Amps) |
|                           | Max Boost     | Max Trickle | 80% | 60% | 40% | Max Boost           | Max Trickle | 80% | 60% | 40% |                          |
| Centrex CX125             | 108           | 101         | 80  | 60  | 40  | 46                  | 45          | 26  | 12  | 6   | 0.74                     |

| Centrex CX125           |          | Sound Power Levels, $L_w$ (dB) - Octave Bands Frequency Hz. |     |     |     |    |    |     |     | Sound Pressure dBA @ 3m |
|-------------------------|----------|---|-----|-----|-----|----|----|-----|-----|-------------------------|
| Curve Ref               |          | 63  | 125 | 250 | 500 | 1k | 2k | 4k  | 8k  |                         |
| Max Boost (108 l/sec)   | Extract  | 53  | 58  | 59  | 55  | 54 | 52 | 48  | 52  | 28.2                    |
|                         | Supply   | 58  | 63  | 64  | 60  | 59 | 57 | 53  | 57  |                         |
|                         | Breakout | 56  | 56  | 51  | 41  | 34 | 26 | 16  | 18  |                         |
| Max Trickle (101 l/sec) | Extract  | 52  | 57  | 58  | 54  | 53 | 51 | 46  | 50  | 27.2                    |
|                         | Supply   | 57  | 62  | 63  | 59  | 58 | 56 | 51  | 55  |                         |
|                         | Breakout | 55  | 55  | 50  | 40  | 33 | 25 | 14  | 16  |                         |
| 80% (80 l/sec)          | Extract  | 48  | 53  | 53  | 49  | 48 | 46 | 40  | 42  | 22.5                    |
|                         | Supply   | 53  | 58  | 58  | 54  | 53 | 51 | 45  | 47  |                         |
|                         | Breakout | 51  | 51  | 45  | 35  | 28 | 20 | 8   | 8   |                         |
| 60% (60 l/sec)          | Extract  | 45  | 49  | 47  | 43  | 42 | 39 | 32  | 32  | 17.4                    |
|                         | Supply   | 50  | 54  | 52  | 48  | 47 | 44 | 37  | 37  |                         |
|                         | Breakout | 48  | 47  | 39  | 29  | 22 | 19 | < 5 | < 5 |                         |
| 40% (40 l/sec)          | Extract  | 40  | 42  | 40  | 36  | 35 | 31 | 24  | 12  | 10.5                    |
|                         | Supply   | 45  | 47  | 45  | 41  | 40 | 36 | 29  | 17  |                         |
|                         | Breakout | 43  | 40  | 32  | 22  | 15 | 5  | < 5 | < 5 |                         |

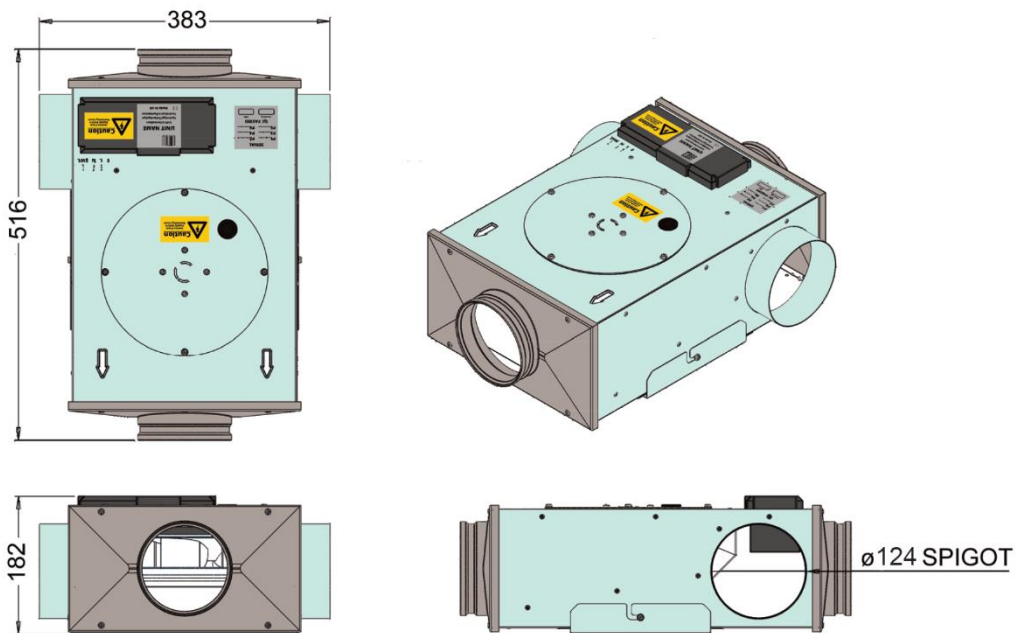
The breakout dB(A) sound pressure values are given for hemispherical free field propagation at a distance of 3m from the unit

Extract and Supply values are in-duct sound power levels

### PERFORMANCE (curves are for guidance only)



### DIMENSIONS - mm



**N.B** sufficient access for safe maintenance or removal following installation, MUST be provided for this product - kg 7.

E&OE: Kair operates a policy of continuous product improvement and reserves the right to change the design, construction and/or specification of the product at any time. - Ver: 1.01.20230710