

# Quiet Pack (QP)

## In-Line Centrifugal Duct Fans



from Vent-Axia

### Features & Benefits

- 'O' Class rated acoustically treated casing, ensuring minimum duct and breakout noise levels
- Air volumes up to 1.08m<sup>3</sup>/s
- Suitable for external pressures up to 430Pa
- Designed to suit duct diameters from 100 to 500mm
- Operating Temperatures from 15°C up to +40°C
- Speed Controllable
- Quality Assurance to BS EN ISO 9001:1994
- Performance tested to BS848 Part 1 1980

The Quiet Pack in-line acoustic fans shall be as supplied from Roof Units, designed around a high performance centrifugal impeller, offering a highly efficient, quiet and compact in-line acoustic fan.

The Quiet Pack fan shall be manufactured from prime quality galvanised sheet steel, for mounting internally as standard or with a special treatment for externally mounting, ensuring a robust in-line fan for those tough site conditions.

Quiet Pack casings shall be internally treated with an 'O' class rated acoustic foam, which offers the benefits of excellent low level duct bound and breakout sound levels, in addition self extinguishing properties, zero burn rate, resistant to ignition, and no toxic fumes.

Quiet Pack fans are to be suitable for circular ducting ranging in sizes 100, 125, 150, 160, 200, 250, 315, 400 and 500mm, with air volumes from 0.064m<sup>3</sup>/s to 1.08m<sup>3</sup>/s and pressure development up to 430Pa.

The casing shall be specially designed to allow the unit to be mounted via drop rods or anti vibration mounts, ensuring a quick and easy solution to installation of the Quiet Pack in-line acoustic fans. All manufacturing progressed of the Quiet Pack fan units are computer designed and controlled to BS EN ISO 9001 Standards.

### Impellers

The motor and backward curved impeller shall be factory matched, statically and dynamically balanced on precision machines, to DIN ISO 1940 Grade 6.3, to give quiet, vibration free running. The aerodynamic blades and motor housing shall be manufactured from prime quality galvanised sheet steel.

### Motors

Motor insulation Class B, suitable for operating temperatures from -15°C to +40°C and atmospheres up to 95% RH.

All sizes are ideally suitable for speed control by electronic or voltage reduction. Vent-Axia would recommend that a voltage reduction Auto Transformer speed controller is used with all Quiet Pack units to ensure minimum noise levels during speed control and to eliminate any possibility of harmonic noise levels which occur when using electronic speed controllers at lower speeds.

### Performance

The fan performance, shall be in accordance with tests to BS848 Part 1 1980, with the fan sound levels, measured in a reverberant chamber in accordance with BS848 Part 2 1985.

### Quality Assurance

Design and manufacture shall be in accordance with the standard for quality management systems BS EN ISO 9001:1994.

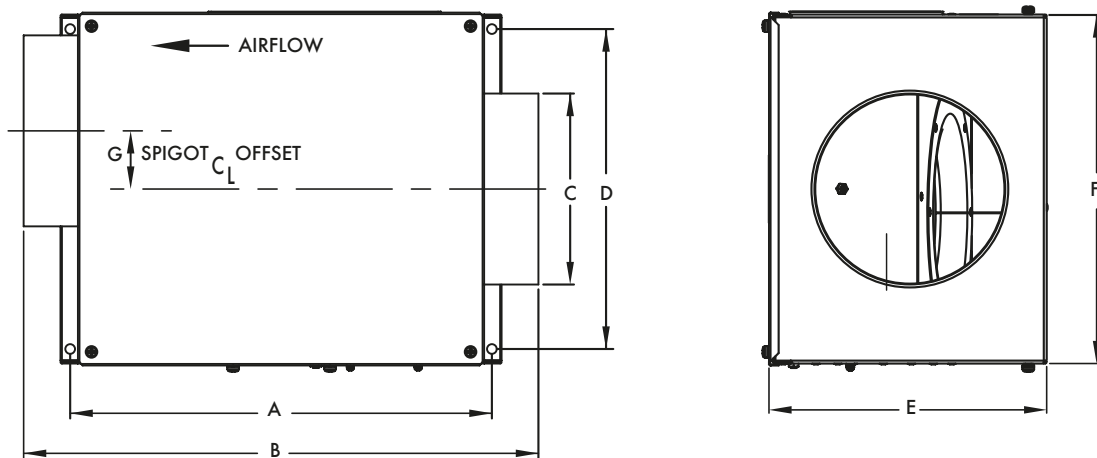
### Accessories

A full range of accessories are available with the Fan Box range of fans such as:

- Auto Transformer Speed Controllers
- Electronic Speed Controllers
- D.O.L. Starters
- Standard, Acoustic & Thermal Flexible Ducting
- Pre-Panel or Secondary Bag Filters
- Electric Heater Batteries
- Backdraught Shutters
- In-Line Attenuators
- Wall & Roof Terminals
- Fast Clamps
- Weatherproofing

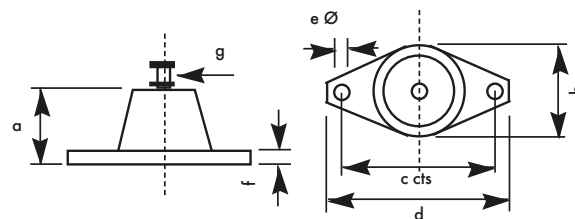


### Dimensions (mm)



Stock Ref	A	B	CØ	D	E	F	G	Weight
								kg
QP100C	380	443	100	275	192	306	62	8.5
QP125C	380	443	125	275	192	306	62	8.5
QP150C	380	443	150	275	192	306	62	8.5
QP160C	380	443	150	275	192	306	62	8.5
QP200C	435	531	200	330	287	360	60	12.5
QP250C	435	531	250	330	287	360	35	13
QP315C	710	808	315	540	458	568	43	34
QP400C	710	808	400	540	458	568	43	36
QP500C	898	996	500	735	577	765	59	55

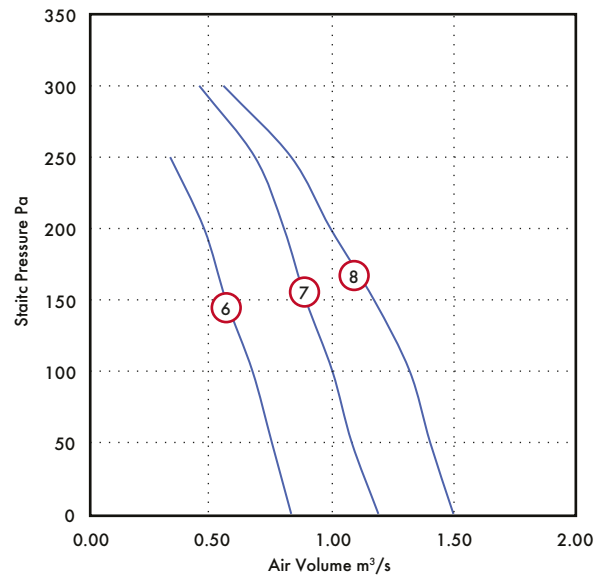
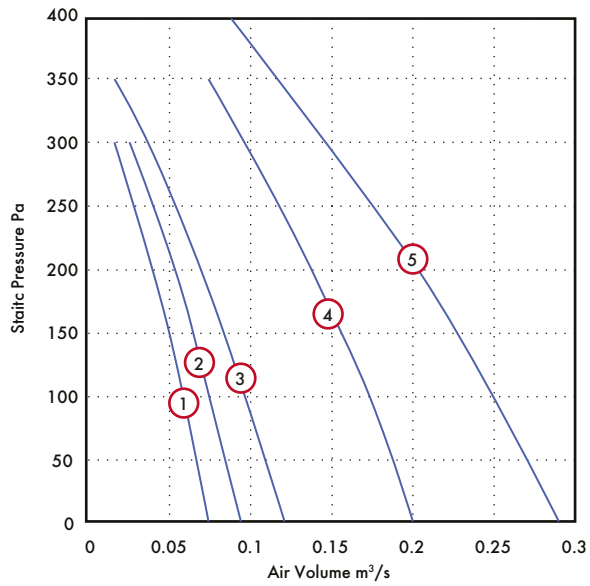
### Anti Vibration Mountings



Stock Ref	a	b	c	d	eØ	f	g
68MP033G	27	37	54	67	7	3	M8

# Quiet Pack (QP)

## Performance Curves



## Performance Guide

Stock Ref	rpm	Phase	Curve Ref	Duty m <sup>3</sup> /s @ Pa										Amps			
				0	50	100	150	200	250	300	350	400	450	kW	FLC	SC	
QP100C	2450	1	1	0.075	0.068	0.059	0.051	0.041	0.029	0.016					0.058	0.26	1.04
QP125C	2450	1	2	0.094	0.086	0.076	0.065	0.053	0.040	0.025					0.058	0.26	1.04
QP150C	2450	1	3	0.121	0.112	0.098	0.085	0.070	0.054	0.038	0.016				0.058	0.26	1.04
QP160C	2450	1	3	0.121	0.112	0.098	0.085	0.070	0.054	0.038	0.016				0.058	0.26	1.04
QP200C	2700	1	4	0.200	0.188	0.175	0.156	0.138	0.118	0.098	0.073				0.12	0.48	1.92
QP250C	2400	1	5	0.289	0.271	0.251	0.227	0.201	0.175	0.146	0.117	0.088	0.053	0.13	0.65	3.0	
QP315C	1330	1	6	0.83	0.75	0.67	0.56	0.47	0.33					0.27	1.18	4.72	
QP400C	1340	1	7	1.19	1.08	1.00	0.89	0.80	0.68	0.45				0.47	2.33	9.32	
QP500C	1330	1	8	1.50	1.40	1.32	1.17	0.99	0.83	0.55				0.58	2.6	7.8	

FLC = Full Load Current SC = Starting Current

## Models & Accessories

Fan Stock Ref	Speed Controller			Overload Stock Ref	Anti Vibration Mounts (set of 4) Stock Ref
	Electronic Stock Ref	Auto Transfor. Stock Ref	Starter Stock Ref		
QP100C	SP5001	SPM5020	444744	444699	68MP033G
QP125C	SP5001	SPM5020	444744	444699	68MP033G
QP150C	SP5001	SPM5020	444744	444699	68MP033G
QP160C	SP5001	SPM5020	444744	444699	68MP033G
QP200C	SP5001	SPM5020	444744	444700	68MP033G
QP250C	SP5025	SPM5035	444744	444702	68MP033G
QP315C	SP5050	SPM5060	444744	444703	68MP033G
QP400C	SP5050	SPM5060	444744	444703	68MP033G
QP500C	SP5050	SPM5060	444744	444703	68MP033G

Fan Stock Ref	Electric		Spare Panel		Spare	
	Heaters Stock Ref	Panel Filters Stock Ref	Filters Stock Ref	Bag Filters Stock Ref	Bag Filters Stock Ref	
QP100C	10531100T1	QPF100A	FILTERS100	QPFB100A	FILTERQPFB100	
QP125C	10531125T1	QPF125A	FILTERS125160	QPFB125A	FILTERQPFB125	
QP150C	10531150T1	QPF150A	FILTERS125160	QPFB150A	-	
QP160C	10531150T1	QPF160A	FILTERS125160	QPFB160A	FILTERQPFB160	
QP205C	10531200T1	QPF200A	FILTERS200	QPFB200A	FILTERQPFB200	
QP250C	10531250T1	QPF250A	FILTERS250	QPFB250A	FILTERQPFB250	
QP315C	10531315T1	QPF315A	FILTERS315	QPFB315A	FILTERQPFB315	
QP400C	10531400T3	QPF400A	FILTERS400	QPFB400A	FILTERQPFB400	
QP500C	10531500T3	QPF500A	63PF665	QPFB500A	63BF665	

Fan Stock Ref	In-line Attenuators				Wall Terminal Stock Ref
	300mm Stock Ref	600mm Stock Ref	900mm Stock Ref	1200mm Stock Ref	
QP100C	83010030	83010060	83010090	-	SA100/280
QP125C	83012030	83012060	83012090	-	SA125/280
QP150C	83015030	83015060	83015090	-	SA150/280
QP160C	83016030	83016060	83016090	-	SA150/280
QP205C	-	83020060	83020090	83020120	SA200/280
QP250C	-	83025060	83025090	83025120	SA250/280
QP315C	-	83031060	83031090	83031120	SA315/280
QP400C	-	-	83040090	83040120	QSA400/280
QP500C	-	-	83050090	83050120	-