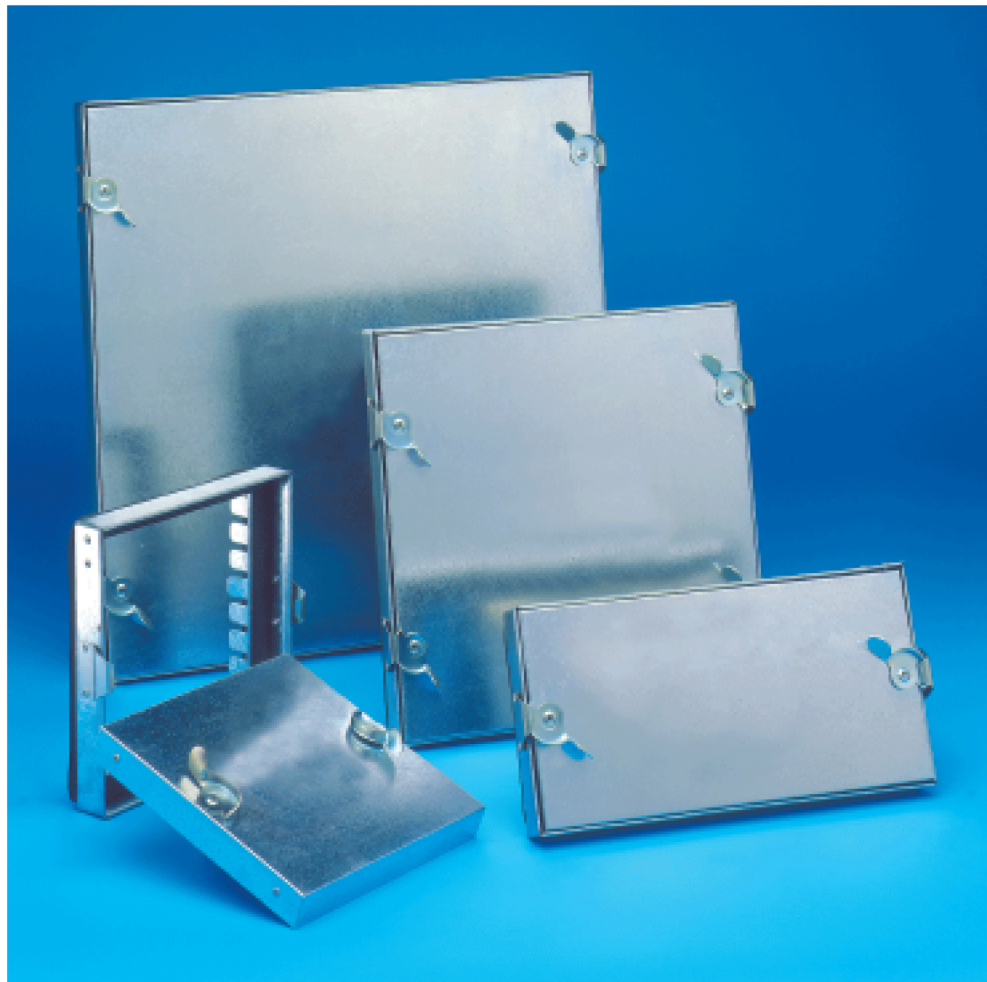


Rectangular “RD” Series Access Doors



- Suitable for high, medium and low pressure applications.
- Comprehensive size range.
- Effective progressive action camlocks.
- Thermally and acoustically insulated.
- Fast and simple to install.
- Complete with sealing gaskets.
- “Safe-edge” radiused tabs on frame.



Description

“RD” Series access doors

designed to provide rapid access to smoke, fire and volume control dampers or other equipment mounted inside ductwork or associated plant. All door panels are of double skin construction completely enclosing the 25mm thick high density insulation.

Features

The “RD” Series of rectangular doors provide a number of unique advantages:-

- All doors are manufactured using C.N.C plant which ensures “close fit” tolerances and “repeatable” quality door after door.
- Fixing tabs have rounded edges to reduce the possibility of fitters & inspection engineers suffering cuts.
- Camlocks & strike plates are manufactured from heavy gauge steel, zinc plated to prevent twisting and deformation.
- Every door is fitted with two gaskets, one between door and frame and a second on the back face of the frame to ensure a good seal between frame and ductwork.
- High quality gaskets used throughout.
- High density insulation.
- Independently tested at BSRIA.

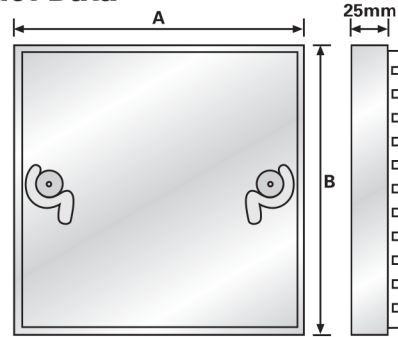
Technical

The “RD” Series of rectangular access doors have been successfully independently type tested by BSRIA for compliance to HVCA standard DW144. The products were tested to Class C with a maximum operating pressure of 2000 Pa positive and 750 Pa negative.

Copies of the complete BSRIA report No 15653/4 are available free on request.

“RD” doors comply fully with DW144 specification.

Product Data



Options

- Stainless steel doors and frames.
- 50mm thick insulated doors.
- “Piano” hinge on one edge when hinged doors are required, product reference “RDH”.
- Safety chain between door and frame, product reference “RDSC”.
- Other sizes to special order.

Specification

CCL “RD” doors and frames are manufactured from corrosion resistant galvanised steel and fitted with steel zinc plated camlocks and hooks. Gaskets are fitted to both faces of the frame.

The door panels are filled with high density insulation material.

Installation

1. Cut a hole in duct 30mm under nominal panel size.
2. Ensure that the hole is square and that the duct is adequately stiffened to prevent ‘panting’.
3. Offer access door subframe into aperture and knock over edge tabs whilst supporting the subframe firmly onto the duct. Ensure that all tabs are knocked over and that the sealing gasket is under compression on all faces including corners.
4. Mount doors into frame and tighten camlocks - do not over tighten.

Model Range

Nominal Size A x B	Duct Opening Size	Cam Type Doors	Hinged Doors
150 x 150	120 x 120	RD15	RDH15
200 x 125	170 x 95	RD21	RDH21
200 x 200	170 x 170	RD20	RDH20
250 x 250	220 x 220	RD25	RDH25
300 x 150	270 x 120	RD31	RDH31
300 x 200	270 x 170	RD32	RDH32
300 x 300	270 x 270	RD30	RDH30
400 x 300	370 x 270	RD44	RDH44
400 x 400	370 x 370	RD40	RDH40
450 x 300	420 x 270	RD43	RDH43
450 x 450	420 x 420	RD45	RDH45
600 x 300	570 x 270	RD63	RDH63
600 x 400	570 x 370	RD64	RDH64
600 x 450	570 x 420	RD65	RDH65
600 x 600	570 x 570	RD66	RDH66