

# Tecflex 500 | TF500

SEMI FLEXIBLE CORRUGATED DUCTING



**Tecflex 500** is a superb flexible duct constructed of one layer of corrugated aluminium. By the inter lockseam a high airtightness and flexibility is reached.

## APPLICATION

- Suitable for mechanical air supply systems and air conditioning systems.
- Systems, where vapors should be exhausted
- Above mentioned systems, where a special mechanical strength is required

## SPECIFICATIONS

Temperature range: -30°C to 250°C  
 Operating pressure: Peak 400°C  
 Operating air velocity: Bending radius: up to +3000 Pa min. 1 x Ø  
 Standard diameter range: 80 – 400 mm  
 Standard length: 3 mtr

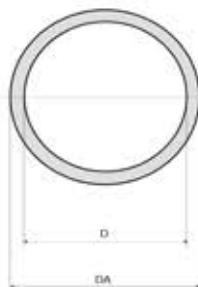
## CONSTRUCTION

Total layers: 1

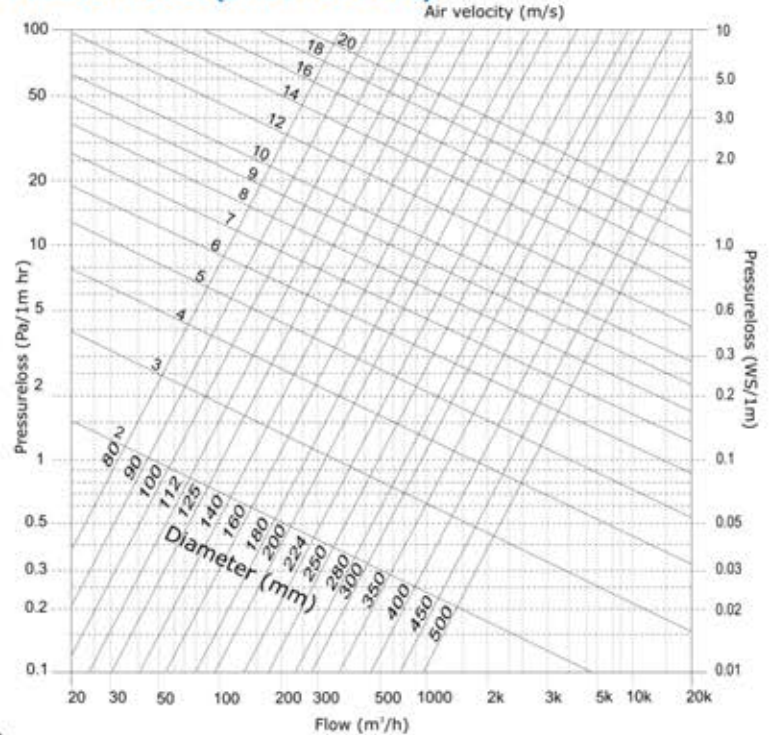
## CLASSIFICATIONS

EU (EN 13501-1): A1  
 UK (BS476): Part 4, 6, 7 and 20  
 FR (NF): M0  
 DE (DIN4102) A1

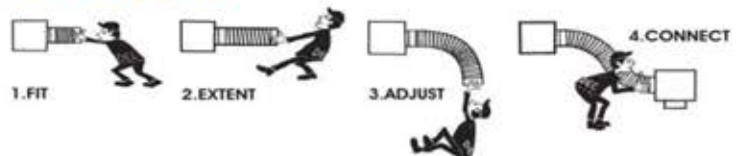
D(mm)	Tolerance	DA (mm)
080	+1,0 / -0	087
100	+1,0 / -0	107
125	+1,0 / -0	132
140	+1,0 / -0	147
150	+1,5 / -0	157
160	+1,5 / -0	167
180	+1,5 / -0	187
200	+1,5 / -0	207
224	+1,5 / -0	231
250	+2,0 / -0	257
280	+2,0 / -0	287
300	+2,0 / -0	307
315	+2,0 / -0	322
355	+2,0 / -0	402
400	+2,0 / -0	407



## PRESSURE LOSS (STRAIGHT DUCT)



## HOW TO INSTALL



**Tecflex 500** fulfills all the requirements and are classified as specified within EN 13180:

*Ventilation for buildings – Ductwork - Dimensions and mechanical requirements for flexible ducts.*