



NEW



dMEV - Elegance - EL1003

- energy efficient EC motor - lowest energy consumption in the UK
- provides low level continuous ventilation to control condensation
- 3 speed axial fan
- choice of 2 low speeds at installation
- wall, ceiling or window (with additional window kit)
- for any domestic wet room
- low noise levels and running costs
- compliant with Building Regulations Parts L1 2013 and F 2013

AVAILABLE NOW FROM

i-sells.co.uk



Showroom:
15 St John's Parade
Sidcup High Street
DA14 6ES

EMAIL: sales@i-sells.co.uk
SALES: 020 8463 9696
WEB: www.i-sells.co.uk

Elegance - EL1003



GENERAL FEATURES

- exhausts directly to the outside (through wall, or window installation with additional window kit, or with medium length ducting - up to 6m)
- runs continuously at pre-selected choice of two speeds (fixed at installation)
- Speed 1 operates at 9.5 l/s (factory set)
- Speed 2 operates at 13.8 l/s
- anti-vibration gasket
- speed boosted to maximum (28.5 l/s) using integral pull cord or by:
 - remote switch/light switch
 - PIR sensor
 - DRH240 (dynamic remote humidistat)
- patented anti-turbulence deflectors ensure very low noise levels and optimum performance
- energy saving ventilation
- **extremely low running costs**
- low carbon footprint
- 5 year warranty

TECHNICAL FEATURES

- shockproof, high quality technopolymer casing
- designed using latest wind tunnel technology and CFD simulations
- EC induction motor with thermal protection
- 43,000 hour life motors with maintenance free and long life ball bearings
- operates in ambient temperatures up to 40°C
- double insulated - no earth required
- **IPX4 - Splashproof** rated - can safely be installed in Zones I and II

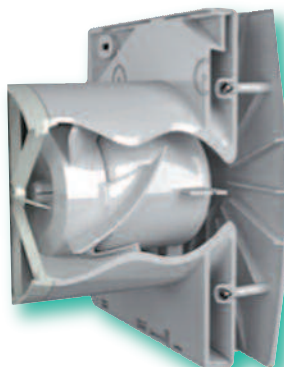
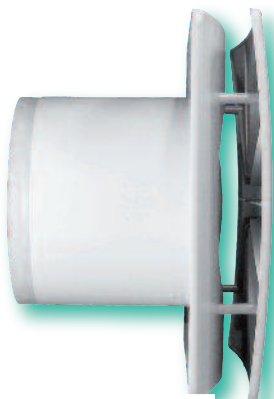
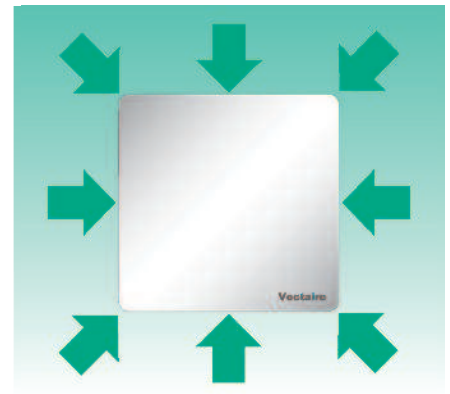
COMPLIES WITH

- Part L1 2013 of Building Regulations for enhanced energy saving capability
- Part F 2013 of Building Regulations for reliable, efficient ventilation
- IEC 60335-2-80, BT 2006/95/CE and EMC 2004/108/CE European Directive against radio interference and electro-magnetic compatibility
- CE marked
- **SAP Q eligible**
- **Energy Saving Trust Best Practice Compliant**

OTHER MODELS AVAILABLE:

- **EL1003DT** - 3 speed, continuous running with comfort timer (timer does not activate unless fan has been running for 2 minutes to avoid unnecessary night-time operation) and pull-cord
- **EL1003HDT** - with comfort timer, humidistat and pull-cord
- **EL1003LV** - 3 speed, continuous running with pull-cord - LOW VOLT (SELV)
- **EL1003DTLV** -3 speed, continuous running, with comfort timer, overrun timer and pull-cord LOW VOLT (SELV)
- **EL1003HDTLV** - 3 speed, continuous running, with comfort timer, humidistat and pull-cord - LOW VOLT (SELV)

N.B timer adjustable from 0-30 mins



Vectaire Ltd can supply all accessories for use with these units, including fire dampers, air valves, ducting, outside grilles, wall cowls and window kits. Additionally, Vectaire offers a design service to ensure that the unit installed is the best possible to provide efficient, effective, low energy and low running cost ventilation. Vectaire can also organise installation, commissioning and maintenance of these products

AVAILABLE NOW FROM

i-sells.co.uk





TECHNICAL CHARACTERISTICS									
Model	Airflow l/sec			Power - Watts			dBA (@ 3m in free field)		
	Speed 1	Speed 2	max	Speed 1	Speed 2	max	Speed 1	Speed 2	max
EL1003	9.5	13.8	28.5	1.3	1.6	4.6	15.1	17.3	31.4

RESULTS for SAP CALCULATIONS ENERGY LEVEL PERFORMANCE - using rigid ducting only			
Unit Configuration	Specific Fan Power (W/l/s)	EST Best Practice Performance Compliant	Flow Rate (l/sec)
In room - kitchen	0.12	Yes	13.0
In room - wetroom	0.11	Yes	8.0
Through wall - kitchen	0.09	Yes	13.0
Through wall - wetroom	0.09	Yes	8.0

Figures from BRE test results at minimum flow rate conditions

RESULTS for SAP CALCULATIONS ENERGY LEVEL PERFORMANCE - using flexible ducting only			
Unit Configuration	Specific Fan Power (W/l/s)	EST Best Practice Performance Compliant	Flow Rate (l/sec)
In room - kitchen	0.13	Yes	13.0
In room - wetroom	0.11	Yes	8.0
Through wall - kitchen	0.09	Yes	13.0
Through wall - wetroom	0.09	Yes	8.0

Figures from BRE test results at minimum flow rate conditions

TYPICAL SPECIFICATION

Supply and Install an EL1003 high performance, energy efficient axial fan which has been tested and is SAP Q Eligible and suitable for **ALL** domestic wet rooms as supplied by Vectaire Ltd, Lincoln Road, Cressex Business Park, High Wycombe, Bucks, HP12 3RH.

The fan is to be suitable for installation either into a wall, ceiling or window (with the appropriate accessories) and to have an air intake around the whole perimeter and have a footprint of no larger than 160mm square. The fan is to be continuous running at its low speed (with a choice of two lower speeds) and be capable of being boosted to maximum speed by means of an integral pull cord or (with the cord removed) a remote switch, PIR sensor or humidistat.

The fan should have specific fan power (as tested by BRE with rigid duct) of no higher than 0.12w/l/s in room in a kitchen and 0.11w/l/s in room in a bathroom. The fan must not exceed 15.1 dB(A) noise level and 1.3w power consumption on the lowest speed.

The fan casing should be made of shock-proof, high quality technopolymer, and should have an EC induction motor with maintenance-free, long life ball bearings, and up to a 43,000 hour life. It should be protected with a thermal cut-out. The fan should be double insulated and be IPX4 splashproof protected suitable for installation into Zones I and II.

The fan is to comply with IEC 60335-2-80, LVD2006/95/CE and EMC 2004/108/CE European Directive against radio interference and electro-magnetic compatibility, be CE marked and SAP Q Eligible.

The fan should have 5 year manufacturer's warranty and be supplied with a user guide as required.

Only approved accessories should be used:

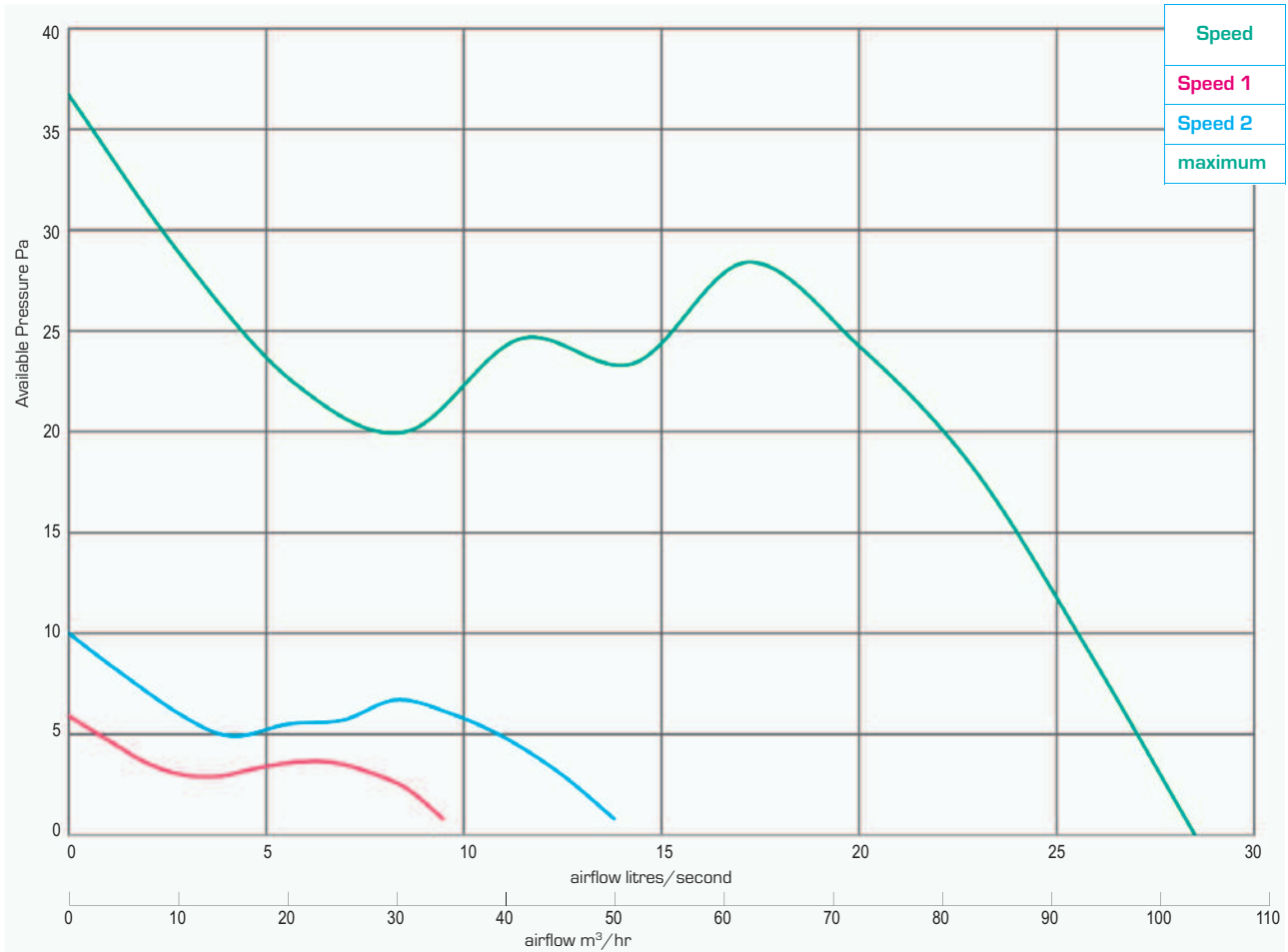
- Wall Plates – as required
- Window kits – as required
- Wall terminations – all wall terminations must use the approved wall cowl or high rise kit



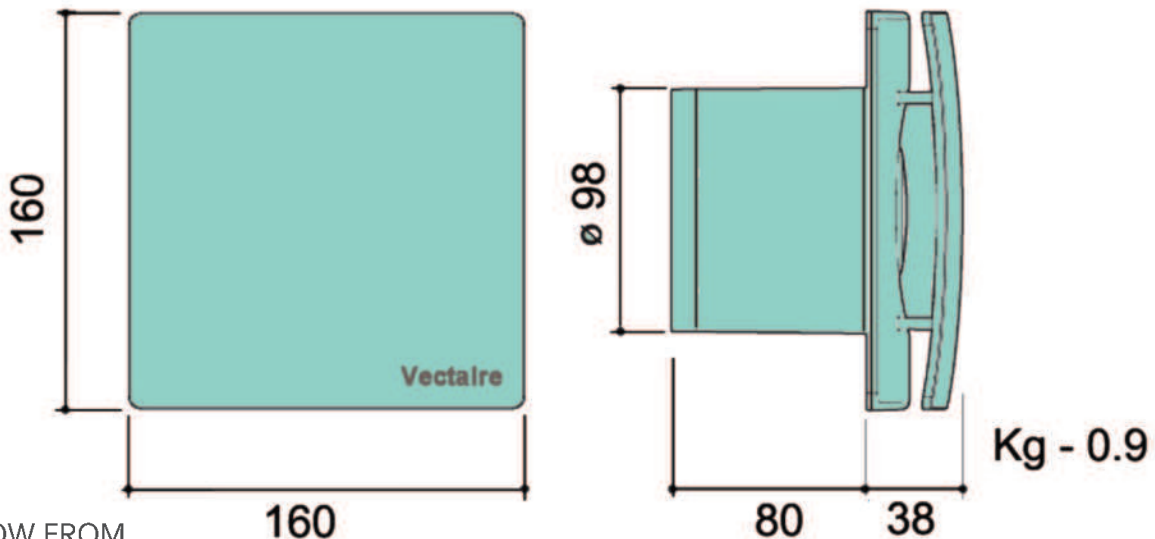
Elegance



PERFORMANCE (curves are for guidance only)



DIMENSIONS - mm



AVAILABLE NOW FROM
i-sells.co.uk

